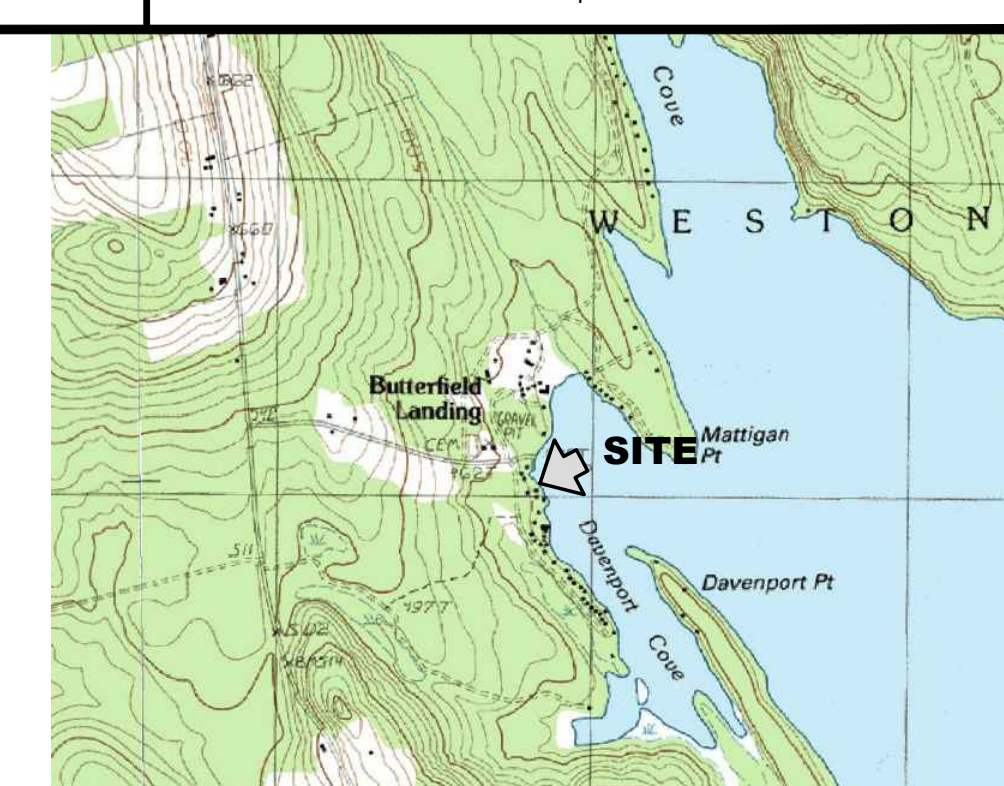
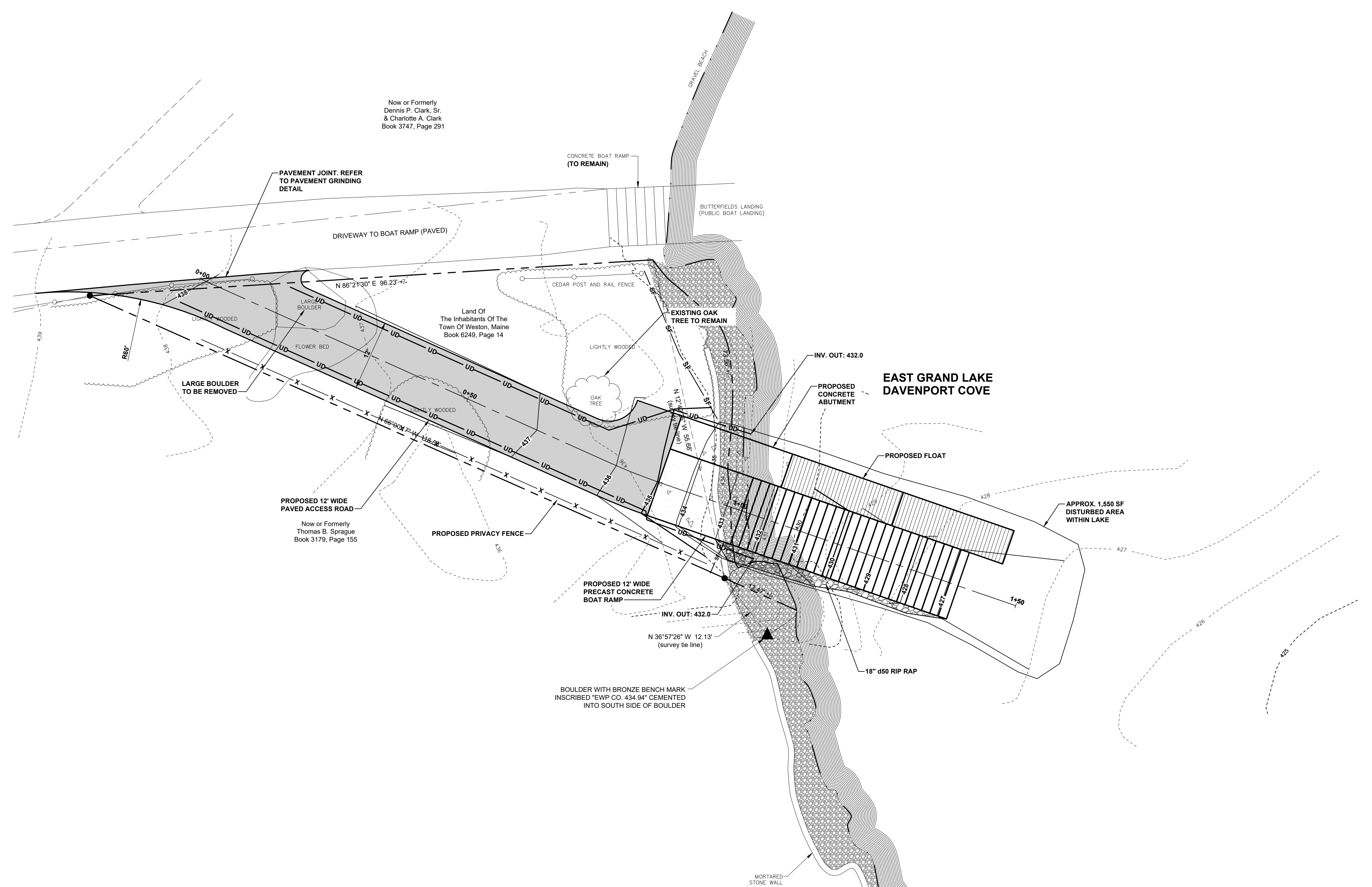


FILE LOCATION: P:\1378\TOWN OF WESTON\01-EAST GRAND LAKE BOAT RAMP\CIVIL\REWORKING\LANDSCAPE\DRAWINGS\DWG\1378\01-CBP.DWG, 2022.11.22, 1:48 PM

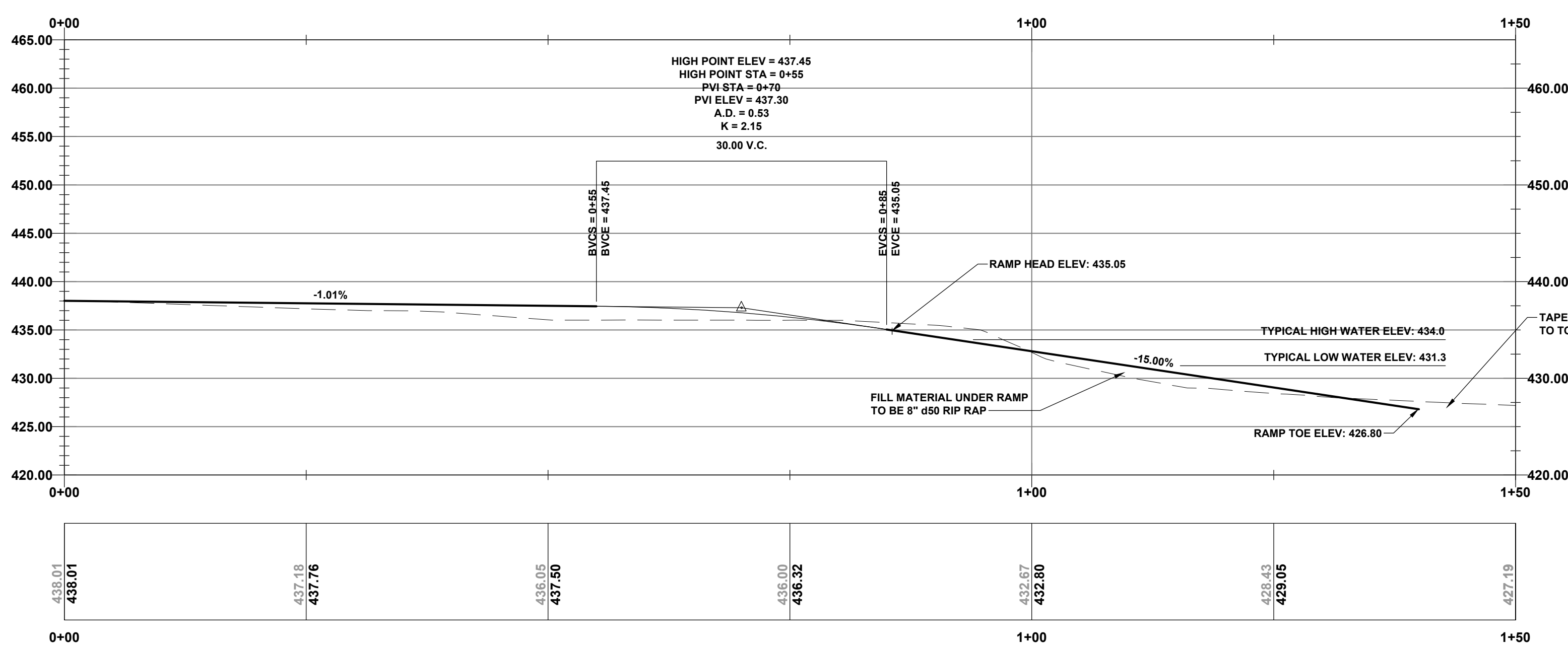
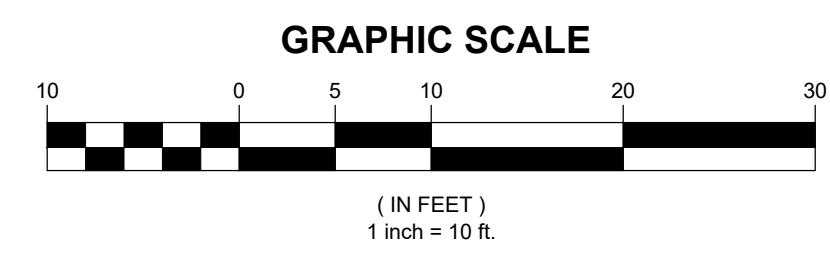


LOCATION MAP: USGS QUADRANGLE: DANFORTH
 MAPTECH® USGS TOPOGRAPHIC SERIES™,
 ©MAPTECH®, INC. 978-933-3000
 WWW.MAPTECH.COM/TOPO

LEGEND:

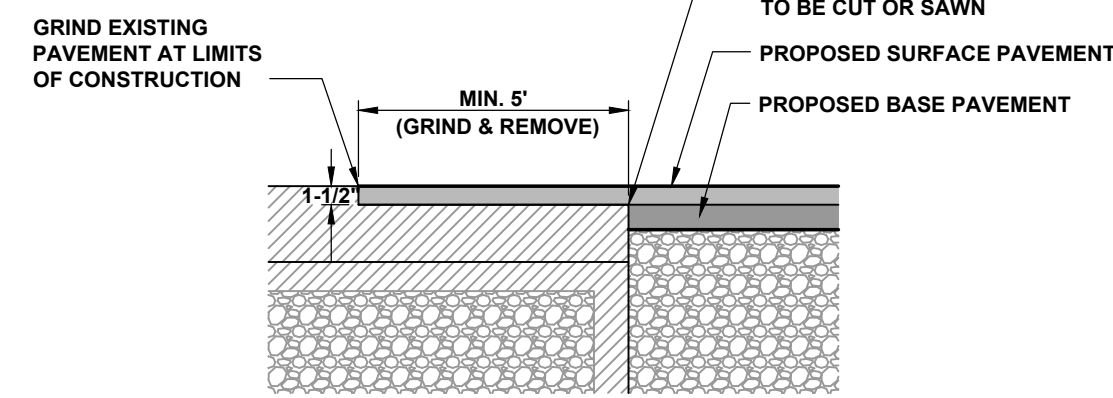
DESCRIPTION	EXISTING	PROPOSED
PROPERTY LINE	---	---
BENCHMARK	⊕	⊕
SURVEY STATION	△	△
SIGN	⊕	⊕
EDGE OF GRAVEL	---	---
MAJOR FOOT CONTOUR	---100---	---100---
MINOR FOOT CONTOUR	---98---	---98---
CHAIN LINK FENCE	X	X
UNDERDRAIN	UD	UD
SILT FENCE	SF	SF
PAVED SURFACE	▭	▭
CONCRETE	▭	▭

PLAN REFERENCE:
 "SURVEY PLAN OF LAND PROPOSED TO BE CONVEYED TO THE TOWN OF WESTON" PREPARED FOR THE TOWN OF WESTON, MAINE, PREPARED AND SURVEYED BY SWALLOW ASSOCIATES LAND SURVEYING ON JANUARY 24, 2020.



- NOTES:**
- UPPER LIMIT OF RAMP EXTENDS A MINIMUM OF 1' ABOVE ORDINARY HIGH WATER.
 - LOWER LIMIT OF RAMP EXTENDS A MINIMUM OF 4' BELOW TYPICAL LOW WATER.
 - WATER LEVEL DATA SOURCE: ESTIMATION OF UNREGULATED MONTHLY, ANNUAL, AND PEAK STREAMFLOWS IN FOREST CITY STREAM AND LAKE LEVELS IN EAST GRAND LAKE, UNITED STATES-CANADA BORDER BETWEEN MAINE AND NEW BRUNSWICK, USGS, SCIENTIFIC INVESTIGATIONS REPORT 2018-5044.

REV.	DATE	DESCRIPTION	BY	CHK.
DRAWING ISSUE STATUS				
ISSUED FOR CONSTRUCTION				
		HALEY WARD ENGINEERING ENVIRONMENTAL SURVEYING		
One Merchants Plaza, Suite 701 Bangor, Maine 04401 207.987.4824				
PROJECT				
BOAT LAUNCH IMPROVEMENTS PROJECT BUTTERFIELD LANDING ROAD, TOWN OF WESTON, MAINE				
TITLE				
PROPOSED SITE PLAN				
		DATE	2022.11.22	SCALE
		SCALE	1"=10'	
DRAWN BY	DESIGNED BY	CHECKED BY		
WAB	DJO	DJO		
PROJECT No.	13786.001			
DRAWING No.	C101			

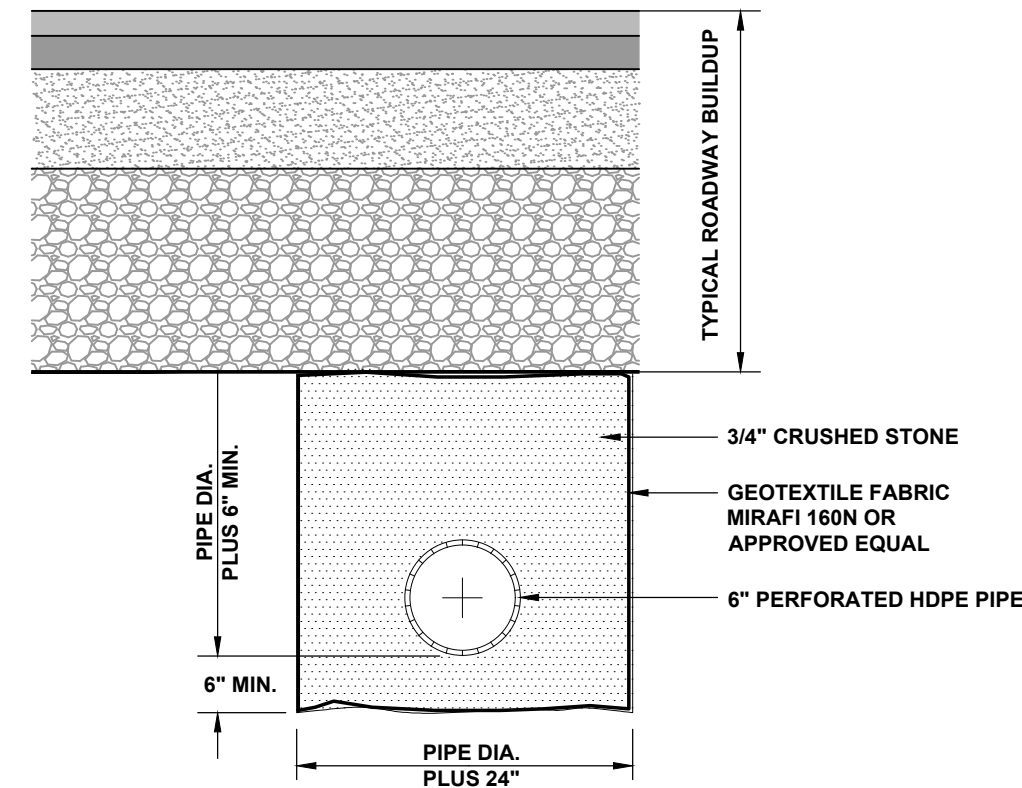


NOTES:

1. EXTEND NEW SURFACE PAVEMENT ACROSS BUTT JOINT IN BASE COURSE.
2. PROVIDE TACK COAT ON ALL SURFACES OF EXISTING PAVEMENT TO BE COVERED.

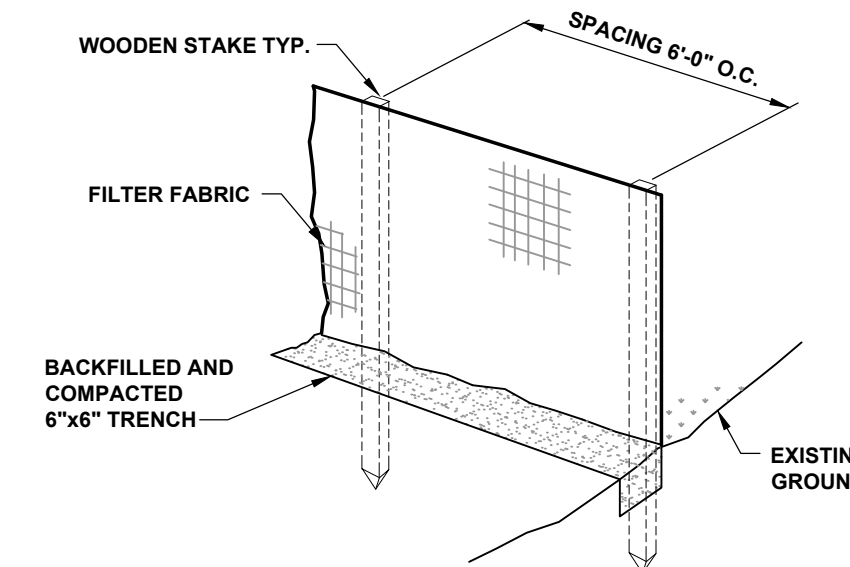
TYPICAL ASPHALT PAVEMENT GRINDING DETAIL

N.T.S.



TYPICAL UNDERDRAIN SECTION AT ROADWAY

N.T.S.



NOTES:

1. KEY FABRIC IN A 6"x6" TRENCH W/BACKFILL AND COMPACT.
2. SILT FENCE SHALL BE A 3' FENCE WITH A MINIMUM GRAB STRENGTH OF 120 LBS.

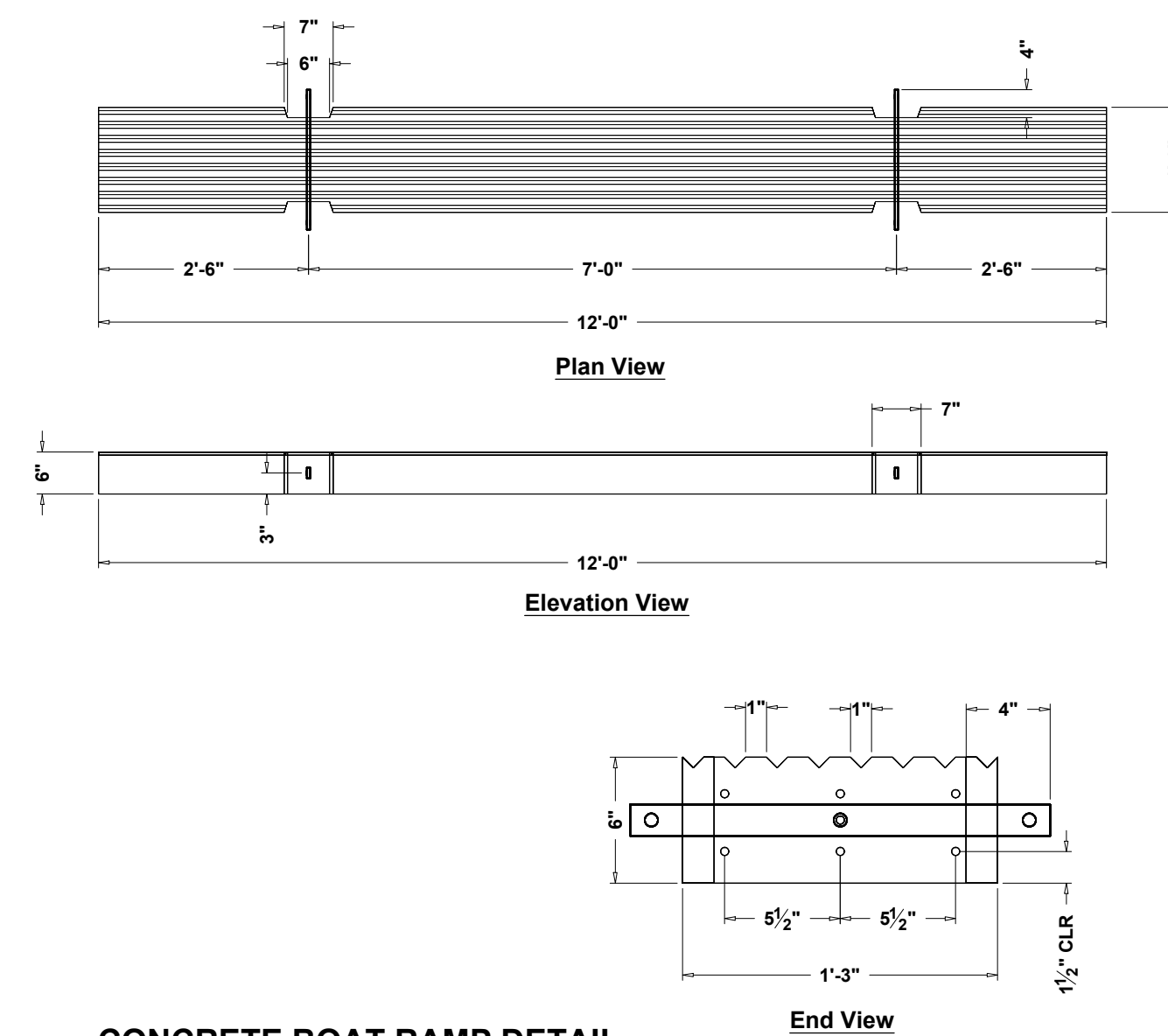
SILT FENCE DETAIL

N.T.S.

EROSION CONTROL NOTES

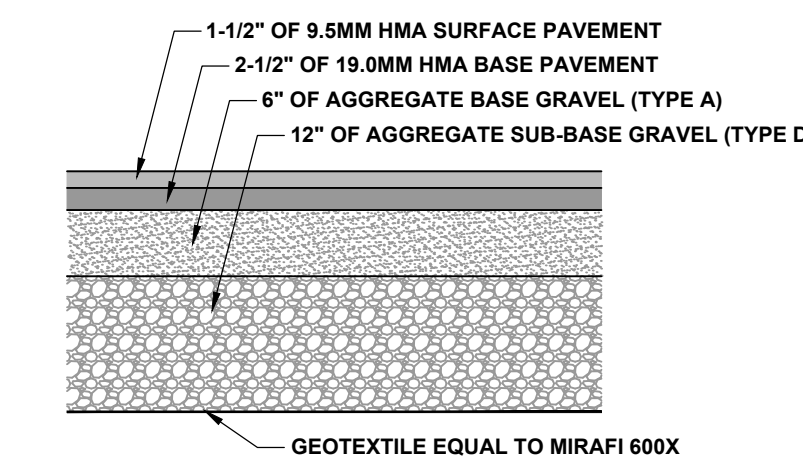
1. ALL SEDIMENTATION AND EROSION CONTROL MEASURES SHALL BE IN ACCORDANCE WITH THE MAINE EROSION AND SEDIMENTATION CONTROL BEST MANAGEMENT PRACTICES (BMPs), PUBLISHED BY THE BUREAU OF LAND AND WATER QUALITY, MAINE DEPARTMENT OF ENVIRONMENTAL PROTECTION, LATEST EDITION.
2. SILT FENCE WILL BE INSPECTED, REPLACED AND/OR REPAIRED IMMEDIATELY FOLLOWING ANY SIGNIFICANT RAINFALL OR SNOW MELT OR LOSS OF SERVICEABILITY DUE TO SEDIMENT ACCUMULATION. AT A MINIMUM, ALL EROSION CONTROL DEVICES WILL BE OBSERVED WEEKLY.
3. DURING THE CONSTRUCTION PHASE, INTERCEPTED SEDIMENT WILL BE RETURNED TO CONSTRUCTION SITE.
4. SEDIMENT CONTROL DEVICES SHALL REMAIN IN PLACE AND BE MAINTAINED BY THE CONTRACTOR UNTIL AREAS UP-SLOPE ARE STABILIZED BY A SUITABLE GROWTH OF GRASS. ONCE A SUITABLE GROWTH OF GRASS HAS BEEN OBTAINED, ALL TEMPORARY EROSION CONTROL ITEMS SHALL BE REMOVED BY THE CONTRACTOR. ANY SEDIMENT DEPOSITS REMAINING IN PLACE AFTER THEY ARE REMOVED SHALL BE DRESSED TO CONFORM WITH THE EXISTING GRADE, PREPARED, SEEDED, AND MULCHED IMMEDIATELY.
5. ALL DISTURBED AREAS WILL BE SEEDED WITH 2.5 LBS. RED FESCUE AND 0.5 LBS. RYE GRASS PER 1,000 SQUARE FEET AND MULCHED AT A RATE OF 90 LBS. PER 1,000 SQUARE FEET OR EQUIVALENT APPLICATION OF SEED AND MULCH.
6. A SUITABLE BINDER SUCH AS CURASOL OR TERRTACK WILL BE USED ON THE HAY MULCH FOR WIND CONTROL.
7. IF FINAL SEEDING OF DISTURBED AREAS IS NOT COMPLETED BY SEPTEMBER 15th OF THE YEAR OF CONSTRUCTION, THEN ON THAT DATE THESE AREAS WILL BE GRADED AND SEEDED WITH WINTER RYE AT THE RATE OF 112 POUNDS PER ACRE OR 3 POUNDS PER 1000 SQUARE FEET. THE RYE SEEDING WILL BE PRECEDED BY AN APPLICATION OF 3 TONS OF LIME AND 800 LBS. OF 10-20-20 FERTILIZER OR ITS EQUIVALENT. MULCH WILL BE APPLIED AT A RATE OF 90 POUNDS PER 1000 SQUARE FEET.
8. IF THE RYE SEEDING CANNOT BE COMPLETED BY OCTOBER 1st OR IF THE RYE DOES NOT MAKE ADEQUATE GROWTH BY DECEMBER 1st, THEN ON THOSE DATES, HAY MULCH WILL BE APPLIED AT 150 POUNDS PER 1000 SQUARE FEET.
9. INTERIOR SILT FENCES ALONG CONTOUR DIVIDING FLAT AND STEEP SLOPES, AREAS WITH DIFFERENT DISTURBANCE SCHEDULES, AROUND TEMPORARY STOCKPILES OR IN OTHER UNSPECIFIED POSSIBLE CIRCUMSTANCES SHOULD BE CONSIDERED BY THE CONTRACTOR. THE INTENT OF SUCH INTERIOR SILT FENCES IS TO LIMIT SEDIMENT TRANSPORT WITHIN THE SITE TOWARD THE PROTECTED CATCH BASIN INLETS TO MINIMIZE SEDIMENT REMOVAL REQUIRED BY THE EROSION CONTROL NOTE 9 PROTECTIONS AND EXTEND LIFE OF SUCH DEVICES.
10. MINIMUM EROSION CONTROL MEASURES WILL NEED TO BE IMPLEMENTED AND THE CONTRACTOR WILL BE RESPONSIBLE TO MAINTAIN ALL COMPONENTS OF THE EROSION CONTROL PLAN UNTIL THE SITE IS FULLY STABILIZED. HOWEVER, BASED ON SITE AND WEATHER CONDITIONS DURING CONSTRUCTION, ADDITIONAL EROSION CONTROL MEASURES MAY NEED TO BE IMPLEMENTED. ALL AREAS OF INSTABILITY AND EROSION MUST BE REPAIRED IMMEDIATELY DURING CONSTRUCTION AND NEED TO BE MAINTAINED UNTIL THE SITE IS FULLY STABILIZED OR VEGETATION IS ESTABLISHED. A CONSTRUCTION LOG MUST BE MAINTAINED FOR THE EROSION AND SEDIMENTATION CONTROL INSPECTIONS AND MAINTENANCE

CONTRACTOR WILL BE RESPONSIBLE FOR FOLLOWING PROCEDURES FOUND IN THE "MAINE EROSION AND SEDIMENT CONTROL PRACTICES FIELD GUIDE FOR CONTRACTORS" (PUBLISHED MARCH 2015). THE PUBLICATION CAN BE FOUND AT: [HTTP://WWW.MAINE.GOV/DEP/LAND/EROSION/ESCBMPS/INDEX.HTML](http://www.maine.gov/dep/land/erosion/escbmps/index.html)



CONCRETE BOAT RAMP DETAIL

N.T.S.



TYPICAL PAVEMENT BUILDUP DETAIL

N.T.S.

REV.	DATE	DESCRIPTION	BY	CHK.
ISSUED FOR CONSTRUCTION				
 HALEY WARD ENGINEERING ENVIRONMENTAL SURVEYING One Merchants Plaza, Suite 701 Bangor, Maine 04401 207.989.4824 WWW.HALEYWARD.COM				
PROJECT				
BOAT LAUNCH IMPROVEMENTS PROJECT BUTTERFIELD LANDING ROAD, TOWN OF WESTON, MAINE				
TITLE				
SITE DETAILS				
DATE: 2022.11.22		SCALE: NTS		
DRAWN BY: WAB	DESIGNED BY: WAB	CHECKED BY: DJO		
PROJECT No.:		13786.001		
DRAWING No.:		C501		
				